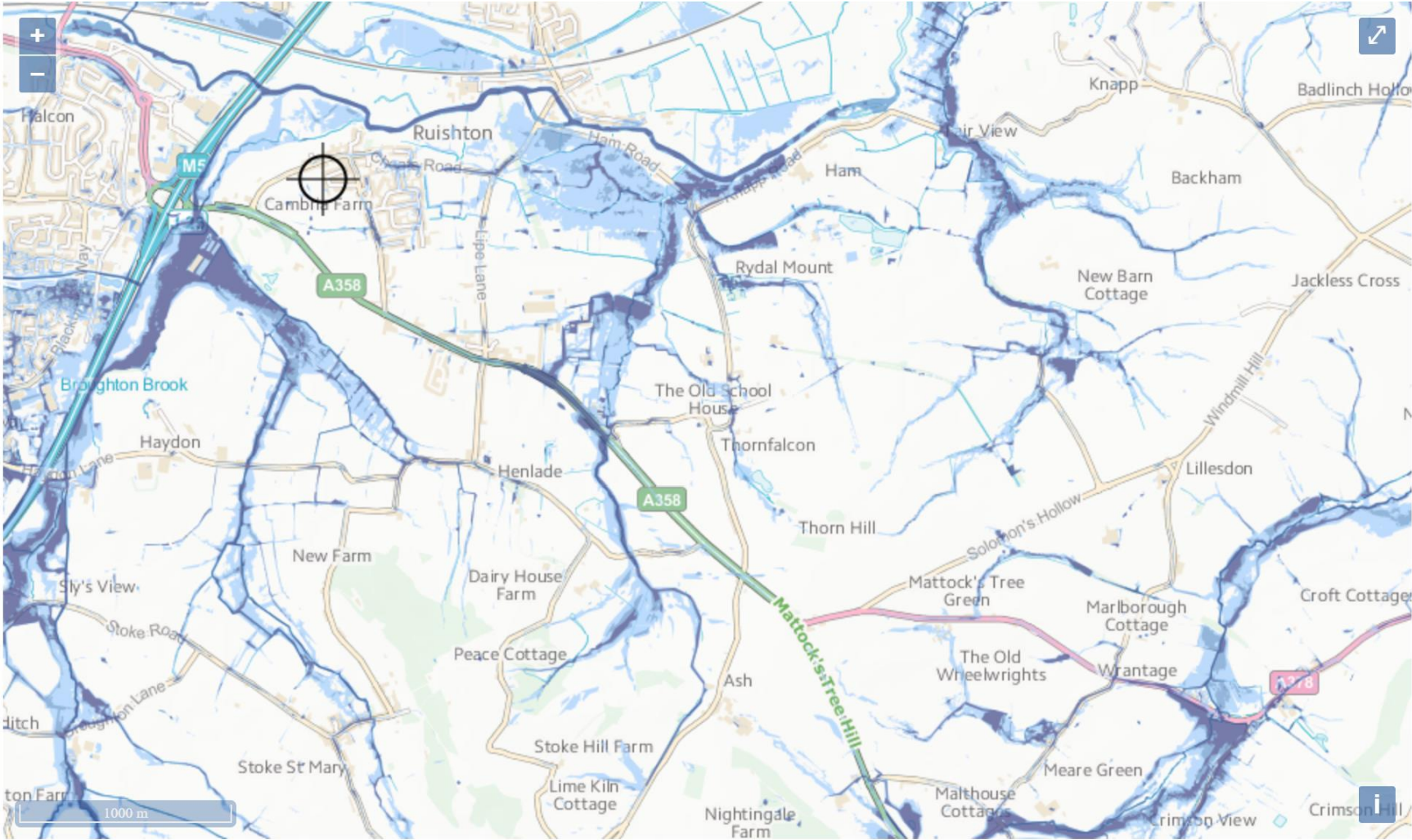


# Flooding from surface water



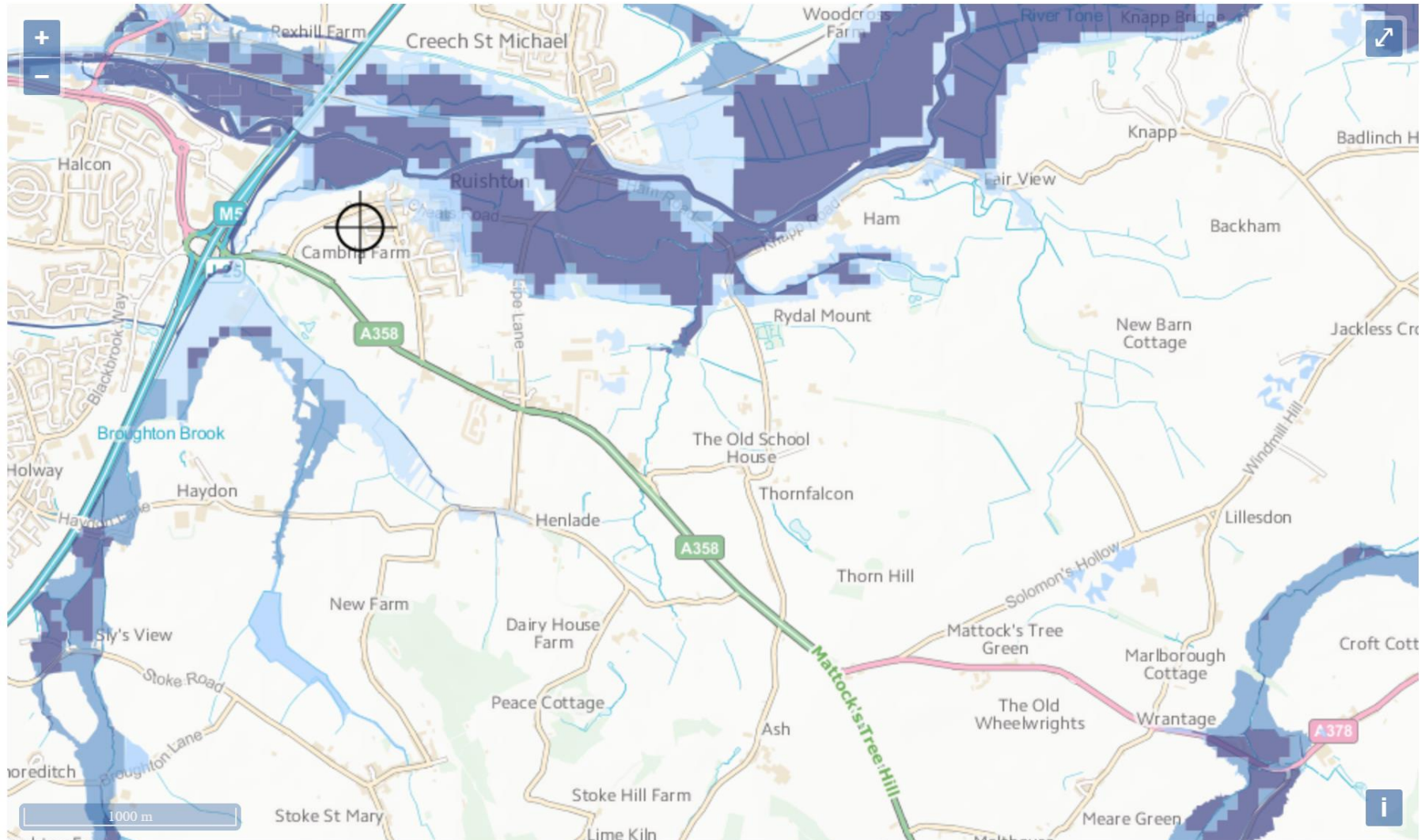
Extent of flooding from surface water

© Crown copyright and database rights (2020) OS 0100060332

● High ● Medium ● Low ○ Very low ⊕ Location you selected

Data source: <https://flood-warning-information.service.gov.uk/long-term-flood-risk/map?eastings=326220&northings=124922&map=SurfaceWater>

## Flooding risk from rivers and sea



Extent of flooding from rivers or the sea

© Crown copyright and database right (2020) OS 0100060332

● High ● Medium ● Low ● Very low ⊕ Location you selected

Data source: <https://flood-warning-information.service.gov.uk/long-term-flood-risk/map?eastings=326220&northing=124922&map=SurfaceWater>